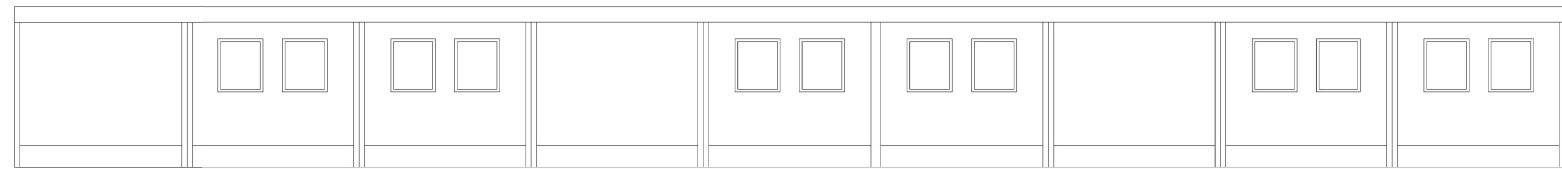
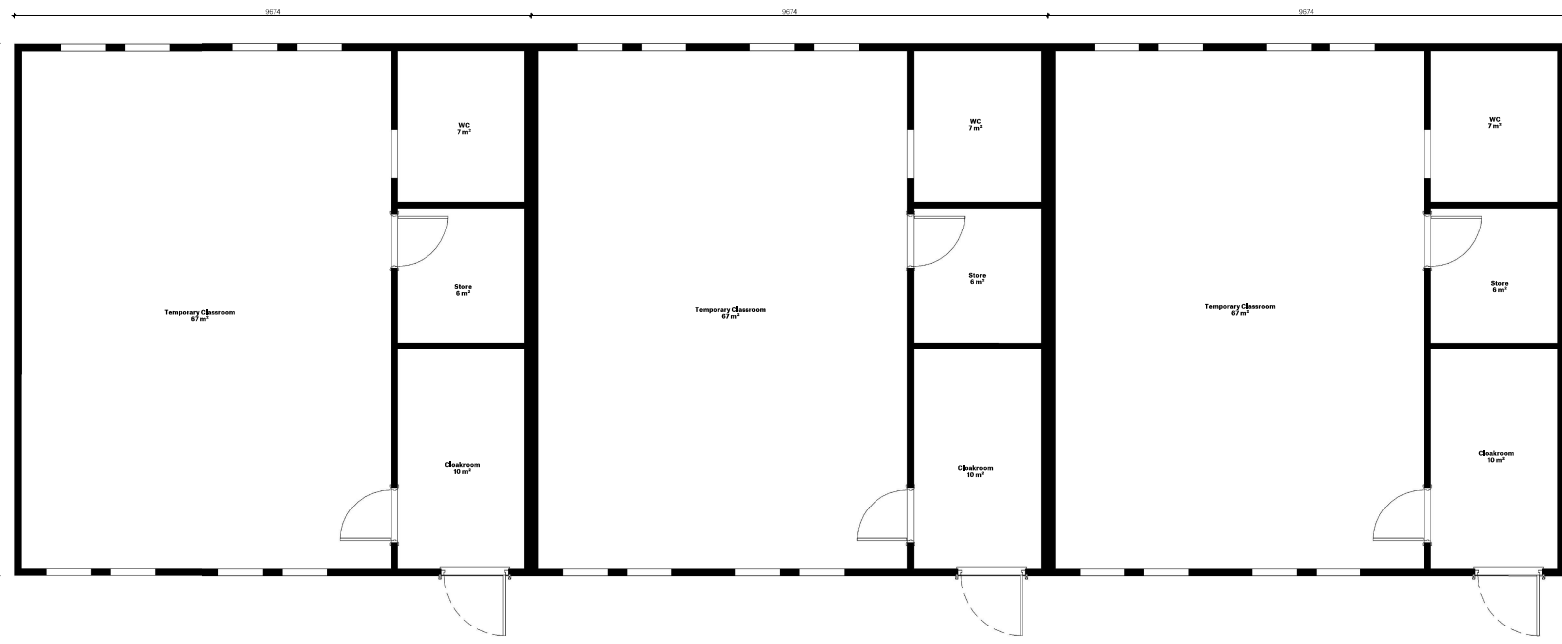


Proposed Temporary Classroom Accommodation - East Elevation
1:50



Proposed Temporary Classroom Accommodation - West Elevation
1:50



Proposed Temporary Classroom Accommodation Floor Plan
1:50

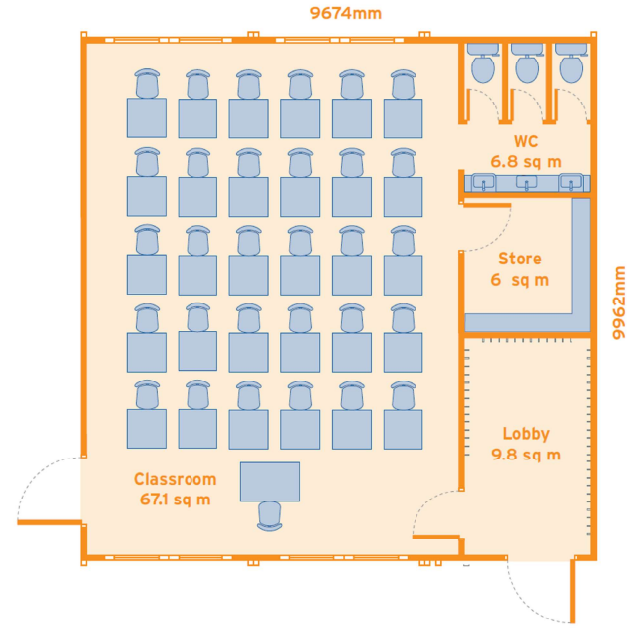


Proposed Temporary Classroom Accommodation - North & South Elevation
1:50

Key

- 1, White double glazed window
- 2, Grey uPVC door
- 3, White Plastic Coated Steel Wall
- 4, Grey Steel clad fascia
- 5, Black Plinth

SC10 Classroom layout



SPACE

- Notes:**
- The proposed Temporary Classroom provision has been based on Wernick Hire's SC10 Standard Classroom Layout Option.
 - Each Classroom unit must include built-in WCs, Cloakroom and Storage.
 - Furniture shown is for illustrative purposes only.
 - Precise details of Temporary Accommodation may vary depending on which manufacturer/supplier is selected.

Project: **Onbridge Lane Primary School**
Drawing Title: **Proposed Temporary Accommodation**

Product No. 08644	Drawing No. XX-XX-DR-A-91013	Status P01	Scale: 1:50
EIR Reference: 08644-SP-ACE-XX-XX-DR-A-91013-P01			